

THE PORTUGUESE AMERICAN CITIZENSHIP PROJECT
A NON-PARTISAN INITIATIVE TO PROMOTE CITIZENSHIP AND CIVIC INVOLVEMENT



ST. ANTHONY PARISH
TAUNTON, MA

EVALUATION
OF
THE 2008 ELECTIONS

October 8, 2009

SUPPORTED BY THE
LUSO-AMERICAN
FOUNDATION

REPORT CONTENTS

- **STATISTICS AND SUMMARY OF WORK** 3
- **RESULTS** 4
- **RECOMMENDATIONS** 7
- **APPENDIX** 8

KEY STATISTICS

- **Number of Parishioners in Taunton and East Taunton: 3,611**
- **Heads of Household registered to vote in Taunton: 1,535**
- **All Household Members registered to vote in Taunton: 1,704**
- **Heads of Household voter turnout* in September 2008 – 23% (citywide turnout 10%)**
- **Heads of Household voter turnout in November 2008 – 76% (citywide turnout 65%)**

SUMMARY OF WORK

St. Anthony has been an active participant in the Portuguese American Citizenship Project since 2002.

For the September 2008 Primary Elections and the November 2008 Presidential Elections, postcards in Portuguese and English were sent to all registered parish voters reminding them of the date, polling hours, and location of the assigned polling station for each election.

* Voter turnout is the number of citizens voting in an election divided by the total number of citizens registered to vote. Voter turnout statistics are based on Taunton residents only.

RESULTS

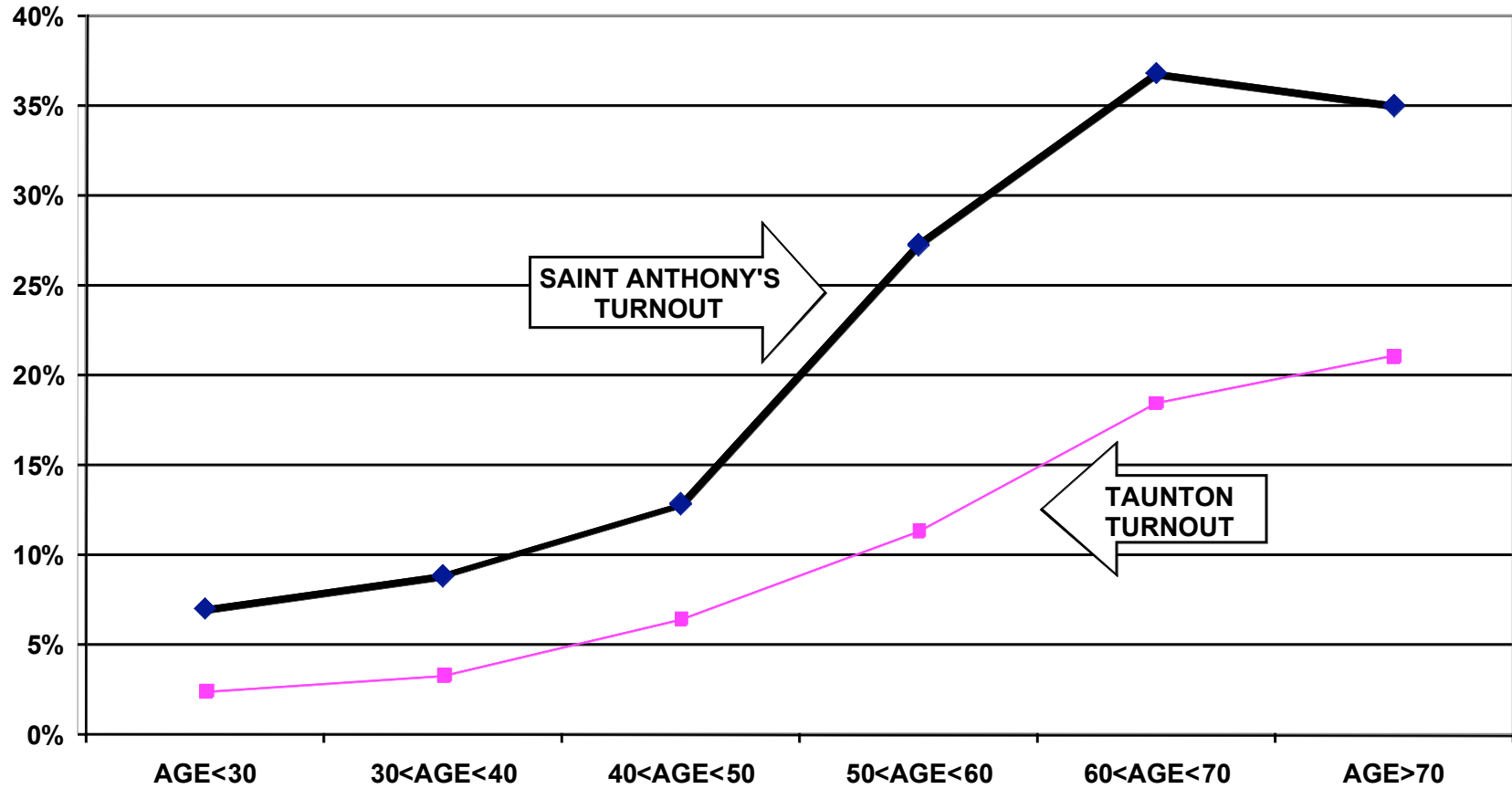
St. Anthony voter turnout for the Fall 2008 elections was consistently higher than citywide turnout. Heads of household turnout for the September 2008 Primary Elections was 23%, as compared to the city turnout of 10%. The St. Anthony heads of household turnout for the November 2008 Presidential Elections was 76%, as compared to the city turnout of 65%.

Voter turnout is not uniform across age groups. Voters under 30 years of age and even those between 30 and 40 years old had lower turnout rates than the older voters. This is true for the registered voters in the parish and true for the registered voters in the community at large.

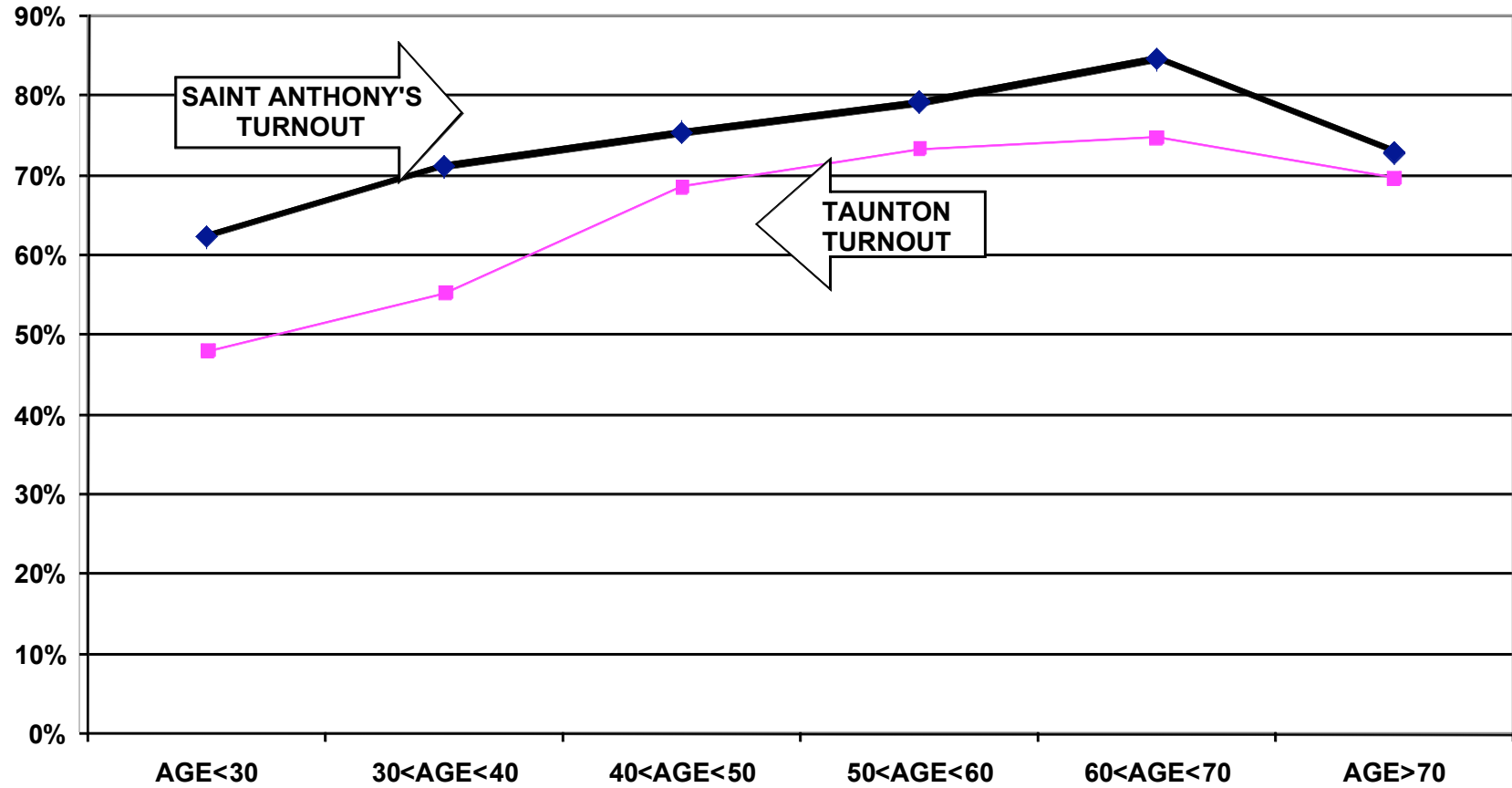
For example, voters under 30 years old had a 7% turnout rate in the September elections while voters between 60 and 70 years old had a 37% turnout rate. For the November elections, the under 30 year old parishioners had a 62% turnout rate compared to a 85% turnout rate for voters between 60 and 70 years old.

The following graphs for the September and November 2008 elections illustrate the relationship between turnout rates and age. These graphs refer to all family members associated with the parish, not just heads of household.

TURNOUT BY AGE SEPTEMBER 2008 SAINT ANTHONY'S PARISH ALL HOUSEHOLD MEMBERS



TURNOUT BY AGE NOVEMBER 2008 SAINT ANTHONY'S PARISH ALL HOUSEHOLD MEMBERS



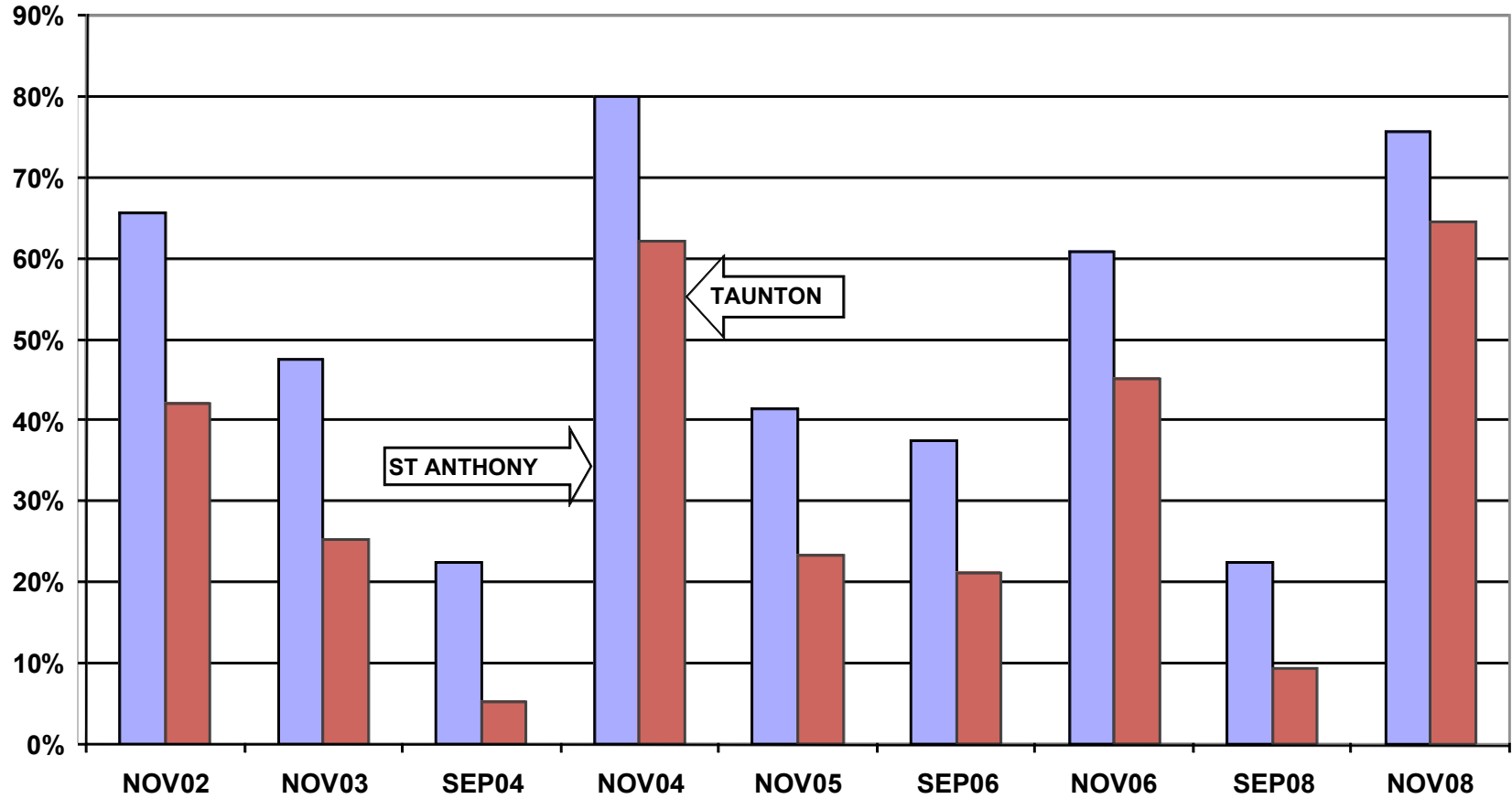
RECOMMENDATIONS

- The parish must determine if and how it will provide funding for the costs of participation in the Citizenship Project. The Luso American Foundation has completed 10 years of financial support for the Project but will terminate this support for 2009 and beyond. In 2009, the Project will continue to provide data processing and assist in the preparation of voter cards. With a mailing permit, the cost of printing and mailing the voter cards for September and November elections is over \$870.
- If the parish cannot provide the financial support for this mailing and/or cannot accomplish the logistics of printing and mailing the voter cards, interested members of the community should examine the accomplishments of the past ten years and determine how to build on these achievements using alternative methods of promoting civic participation.
- The parish which has over 1,700 registered voters and an exceptionally high voter turnout rate, is a force to be reckoned with in the Bristol Country and Taunton political arena. The local political leadership acknowledges the voting strength of the parish but needs to be unequivocally told what the parishioners want from their government. Formal debates and other methods of communication are necessary to allow candidates for public office to know fully what the community wants from their leaders.

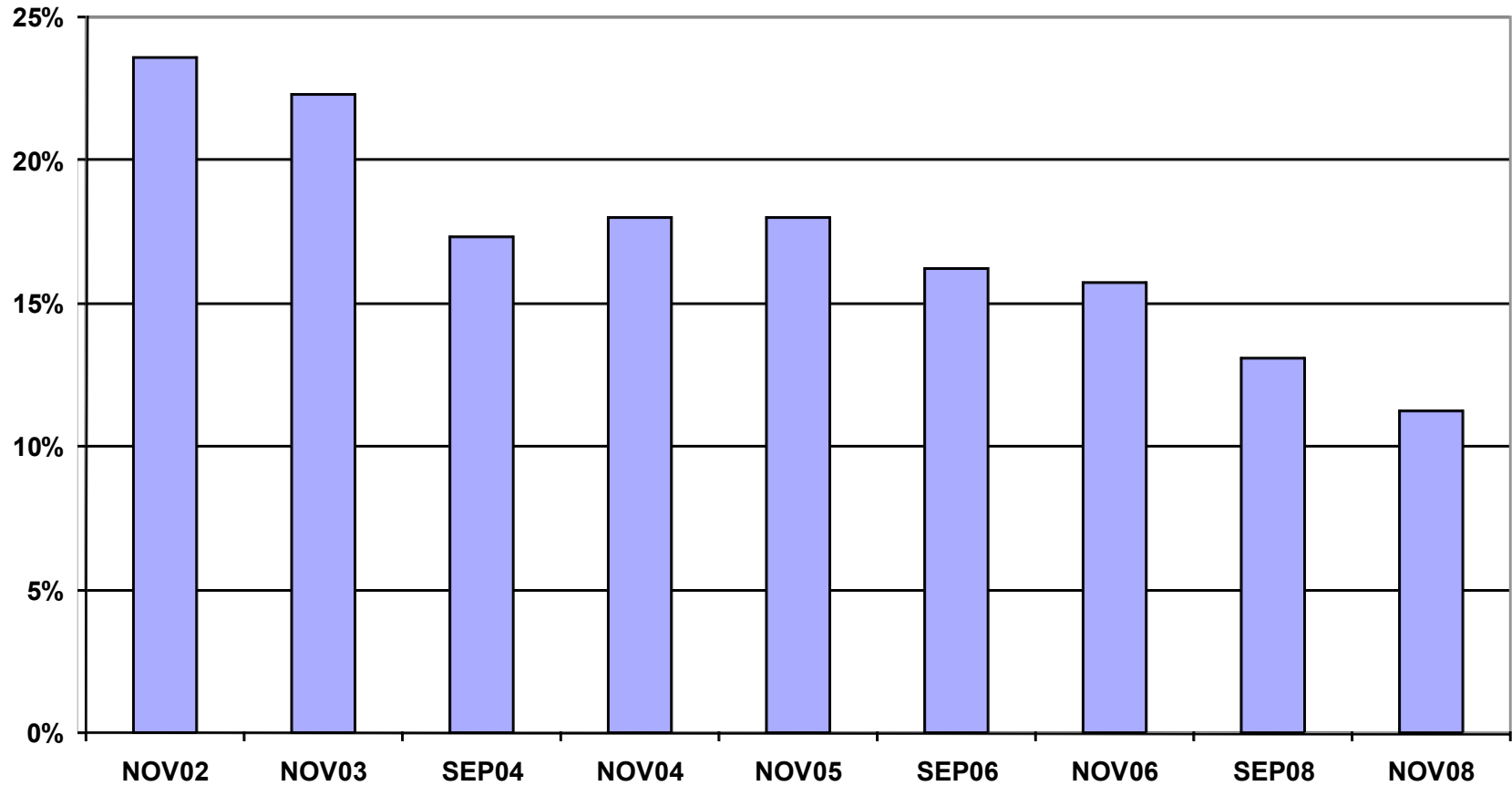
APPENDIX

- Historical Data 9
- Registered Voter Turnout Bar Graph 10
- Difference in Voter Turnout Bar Graph 11
- Registered Voters vs. Actual Voters September 2008 Bar Graph 12
- Registered Voters vs. Actual Voters November 2008 Bar Graph 13

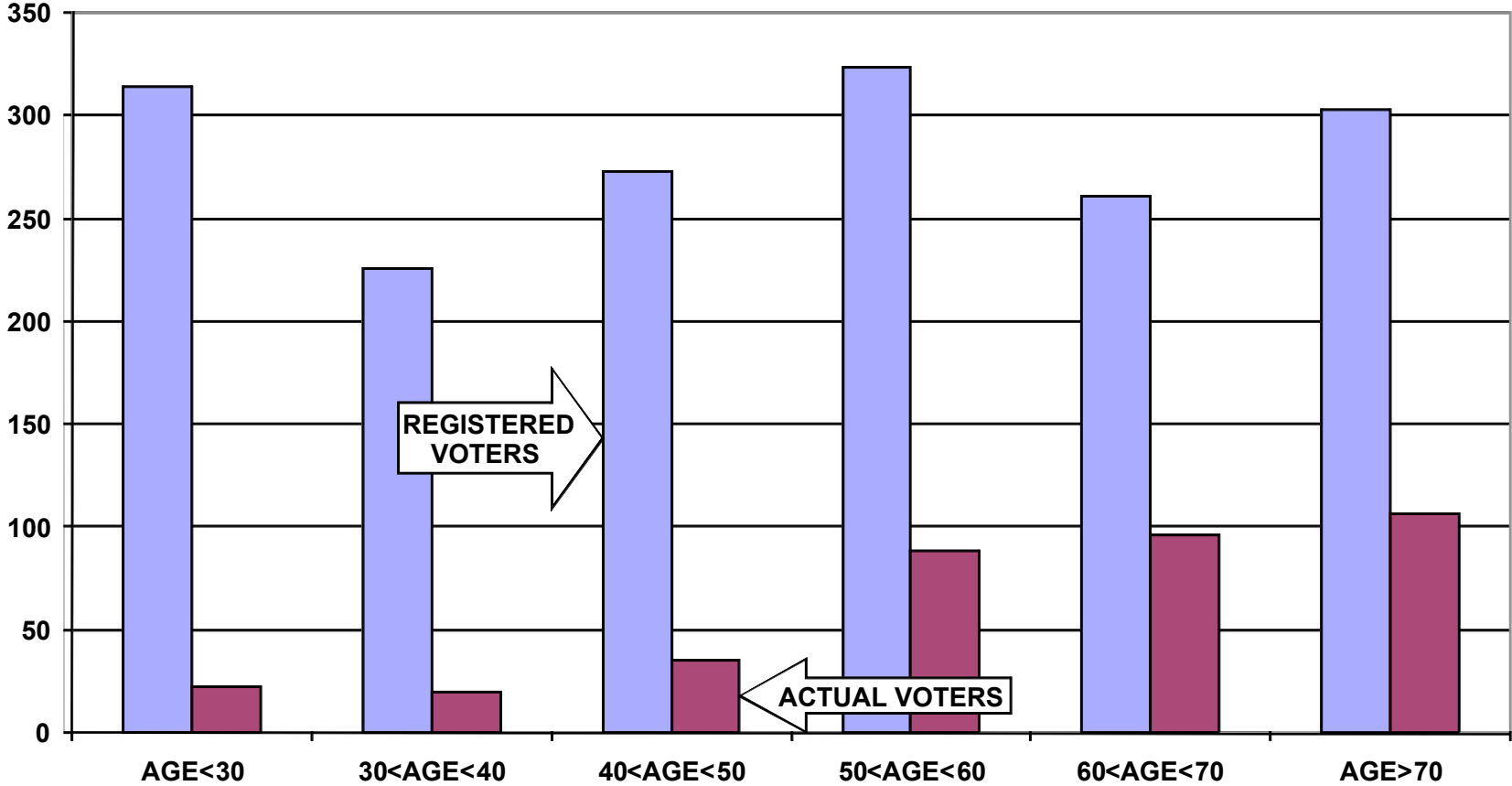
REGISTERED VOTER TURNOUT COMPARISON BETWEEN TAUNTON AND SAINT ANTHONY HEADS OF HOUSEHOLD



DIFFERENCE IN VOTER TURNOUT BETWEEN TAUNTON VOTERS AND SAINT ANTHONY VOTERS HEADS OF HOUSEHOLD



**REGISTERED VOTERS VERSUS ACTUAL VOTERS SEPTEMBER 2008
SAINT ANTHONY'S PARISH
ALL HOUSEHOLD MEMBERS**



**REGISTERED VOTERS VERSUS ACTUAL VOTERS NOVEMBER 2008
SAINT ANTHONY'S PARISH
ALL HOUSEHOLD MEMBERS**

